

Oil level gauge & relay



FS-14G-1

Outline and feature of the product

This product is designed as the micro switch makes or brakes by the up-and-down of a float moving according to oil level.

It is used for oil level control of cooling device for the bearing of the waterwheel generator shaft.

It detects abnormality of the oil level and makes a warning signal or a stop signal.

【 Type 】 FS-10
 FS-20
 FS-13G-1
 FS-14G-1
 FS-16W
 FS-43G
 FS-44G etc.

◆ Example for specification :

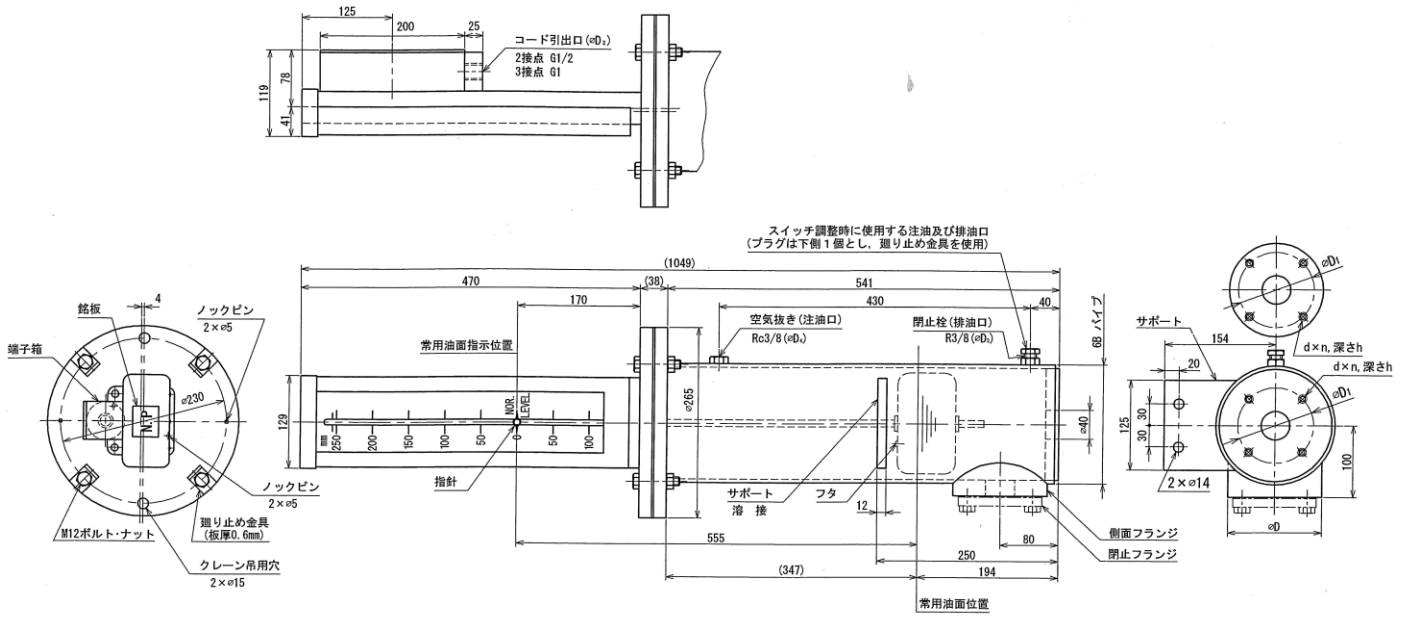
TYPE		FS-10		FS-13G-1 • FS-14G-1		
Scale range(mm)		-100~ +260				
Size of flange		JIS ϕ 90, 4-M12				
Contact		Upper alarm	Lower alarm	Upper alarm	Starting signal	Lower alarm
	Switch circuit	1 c	1 c	1 c	1 c	1 c
	Adjusting range(mm)	+30~+260	-20~-100	+50~+250	0~-100	-30~-100
	Setting Level (mm)	+260	-100	+250	-30	-100
Accuracy(mm)		±5				
Electric specification	Resistance Load*	【for general】 AC480V 10A DC125V 0.5A 【for DC】 DC125V 10A				
	Withstand voltage	AC2000V for 1 min.				
	Insulation resistance	500V megger, 100M Ω above				
Conduit outlets		G1/2		G1		
Terminal screw size		M 4 (P=0.7)		M 5 (P=0.8)		
Weight		Approx. 20kg		13G-1 : 50kg above / 14G-1 : approx.35kg		

※The product can be also manufactured by inductive load.

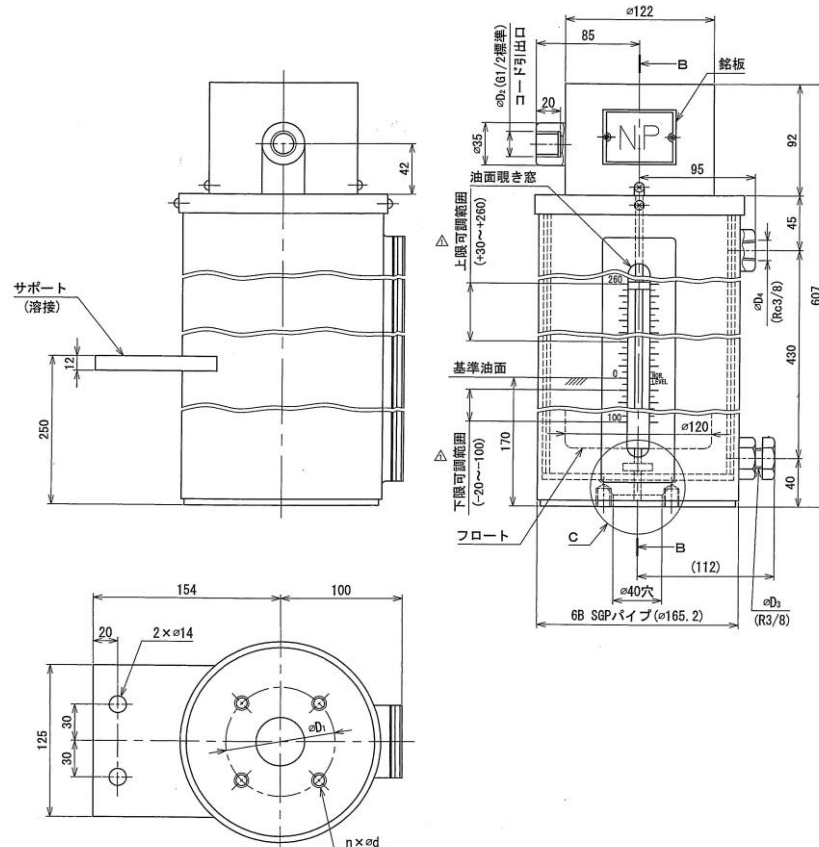
The other specifications are also available. Please contact us for further information.

◆ Fig.

Type: FS-14G-1



Type : FS-10



For further information:

Shinagawa Sokki Mfg. Co., Ltd.
 2-16, Omori-minami 1-chome, Ota-ku, Tokyo 143-0013
 Phone : +81-3-3745-0011 FAX: +81-3-3745-0015
 URL : <http://www.shinagawasokki.co.jp>