

# Temperature relay



## Outline and feature of the product

This product can be widely used as a measuring instrument for management and control of bearing temperature of turbine. The setting temperature can be easily set by the temperature adjusting dial outside the measuring instrument.

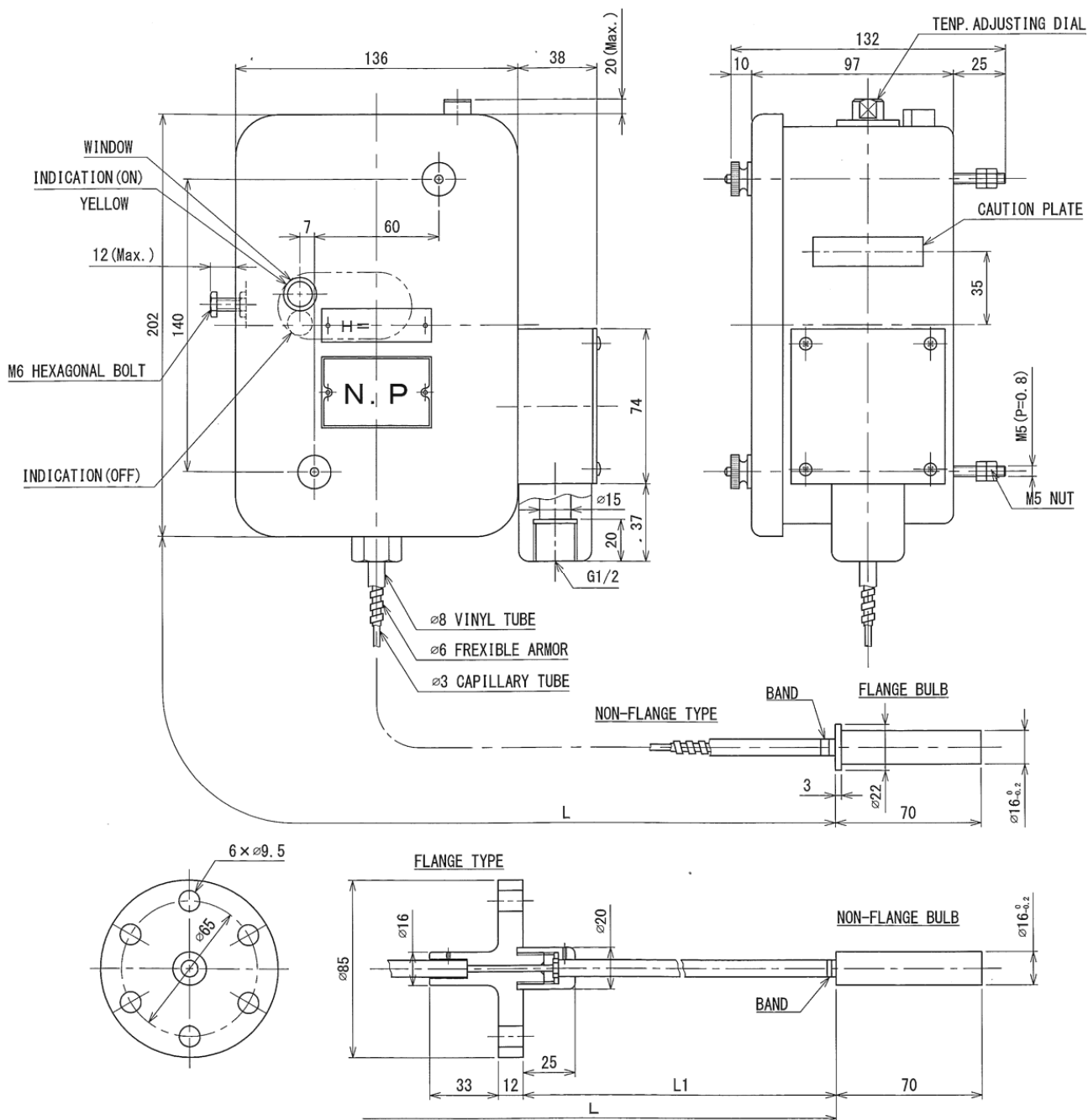
【 Type : TR-83, DC-1M, TS-2, TS-3 etc.】

## ◆ Main Specifications :

Type	TR-83	DC-1M	TS-2	TS-3
Element	Bellows	Bourdon tube	Bellows	Bourdon tube
Switch Setting	Outside adjusting (with indicator)	Inside adjusting (without indicator)	Fixed one contact	Inside adjusting (with indicator)
Setting Temperature range	60~90°C	60~90°C	50~100°C	40~60°C、60~90°C (adjustment is possible)
Reset style	Manual	Automatic	Manual	Automatic
Switch	Micro switch	Micro switch	Micro switch	Micro switch
Accuracy	less than $\pm 3^{\circ}\text{C}$	less than $\pm 3^{\circ}\text{C}$	less than $\pm 3^{\circ}\text{C}$	less than $\pm 2^{\circ}\text{C}$
Contact capacity (resistance load) ※	for general : AC480V 10A DC125V 0.5A for DC : DC125V 10A 250V 3A	for general : AC480V 10A DC125V 0.5A for DC : DC125V 10A 250V 3A	AC480V 15A DC125V 0.5A	for general : AC480V 10A DC125V 0.5A for DC : DC125V 10A 250V 3A
Withstand voltage	AC2000V for 1min.	AC2000V for 1min.	AC2000V for 1min.	AC2000V for 1min.
Insulation resistance	DC 500V Megger, 100M $\Omega$ above	DC 500V Megger, 100M $\Omega$ above	DC 500V Megger, 100M $\Omega$ above	DC 500V Megger, 100M $\Omega$ above
Conduit outlets	G1/2	G1/2		
Terminal screw size	M5 (P=0.8)	M5 (P=0.8)	M5 (P=0.8)	M5 (P=0.8)
Ambient temperature	-20~+50°C	-20~+50°C	-20~+50°C	-20~+50°C
Weight	Approx.4kg	Approx.3kg	Approx.2kg	Approx.5kg

※ These products can also be manufactured by inductive load.

◆ Fig. : Type TR-83



**For further information:**

Shinagawa Sokki Mfg. Co., Ltd.  
 2-16, Omori-minami 1-chome, Ota-ku, Tokyo 143-0013  
 Phone : +81-3-3745-0011 FAX: +81-3-3745-0015  
 URL : <http://www.shinagawasokki.co.jp>