



**Product Name :** Pitot Relay    **Type :** PT-A

**Features:**

1. Maintains the performance of the standard Pitot Relay that is durable against earthquakes.
2. More economical
3. Lighter weight
4. With abundant contact specification (available up to 2 contacts for gas accumulation and 3 contacts for rapid flow of insulation liquid)
5. Corresponding to various types of flanges

## What is Pitot Relay?



Pitot Relay is to be attached to a pipe that connects a transformer body and a conservator in order to detect any trouble and to protect the transformer from any accident. It has slight failure contacts to detect gas accumulation as well as serious failure contacts to detect rapid flow of insulation liquid. While maintaining the features of the traditional Buchholtz Relay, a more durable structure against earthquakes is realized by adopting a pitot tube inside. Pitot Relay that enhance reliability of transformers are broadly utilized in domestic and overseas important transformer substations.

## Features of new type



**1. Maintains the performance of the standard Pitot Relay that is durable against earthquakes.**

Just like the standard Pitot Relay, an earthquake-proof structure that prevents any malfunctions due to an earthquake or vibration of the transformer itself is adopted.

**2. More economical**

The body material was changed to aluminum, which allowed more economical prices.

**3. Lighter weight**

It was successfully realized to decrease the weight by 45% from that of the traditional type. (24 kgs. of the traditional type → 13 kgs. of the new type)  
Attachment to and removal works from pipes can be carried out easier.

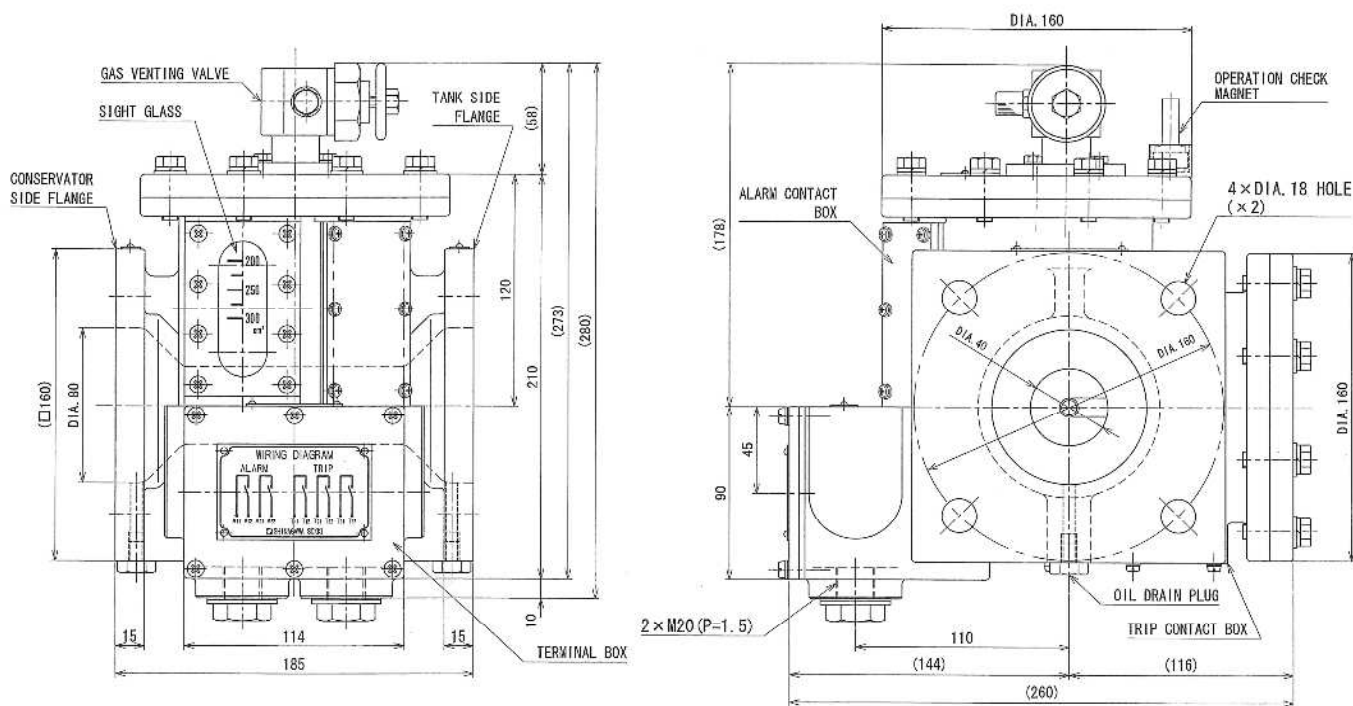
**4. With abundant contact specification (available up to 2 contacts for gas accumulation and 3 contacts for rapid flow of insulation liquid)**

It corresponds to a variety of contact specifications that could not be covered by the traditional Pitot Relay.

**5. Corresponding to various types of flanges**

We manufacture Pitot Relays that comply with each customer's requirements for such as round flanges, square flanges, screw hole positions, screw hole dimensions, etc.

【 Fig. Type : PT-A180LS 】



【 Standard Specification 】

Type name	P T - A
Flange shape and size	Round or Square (4 or 6 holes ), 55 or 80
Gas quantity at slight failure contact	$250 \pm 50\text{cm}^3 \sim 425 \pm 25\text{cm}^3$
Oil flow at serious failure contact	55 : $2.8 \sim 3.4 \text{ L/s}$ ( $1.40 \pm 0.14 \text{ m/s}$ ) 80 : $3.6 \sim 4.4 \text{ L/s}$ ( $0.78 \pm 0.08 \text{ m/s}$ )
Direction of Oil flow	Right to Left or Left to Light
Contact capacity	D C 110V 0.5A, A C 220V 0.5A
Withstand voltage	A C 2000V for 1 min.
Ambient Temperature	-40 ~ +55
Temperature of the insulation liquid	-40 ~ +115
Degree of protection (IP Code)	I P 54
Permissible inclined installation	Maximum angle 5 degrees to piping direction
Weight	13 kgs

**For further information:**

Shinagawa Sokki Mfg. Co., Ltd.  
 2-16, Omori-minami 1-chome, Ota-ku, Tokyo 143-0013  
 Phone : +81-3-3745-0011 FAX: +81-3-3745-0015  
 URL : <http://www.shinagawasokki.co.jp>